

Catholic Social Services supports more than 300 families a year with a variety of services to help home to be a good place for kids to grow up. The demand for our services keep growing and to meet that need we are planning to build a new Family Support Facility in partnership with The Sisters of Mercy at 25 Broughton St South Dunedin.

The cost of this project is around \$1,400,000, but with two thirds of the funding in place, we are well on the way to making this a reality.

We are now inviting others to join us in making a difference for the next generation by making a donation towards this awesome opportunity.



Want to do more?

Contact us now

Making a difference

"I've noticed that compared to when I started the parenting course I have learnt to better connect with my kids and be in the moment."

Dad - Game On Dads' Parenting Course

"Through counselling, I have become more in control of my situation and as my confidence as a parent has improved, my children have become more settled."

Mum - received support from counselling

A message from the Bishop

At the heart of the Christian message is a sense of mission of care for our sisters and brothers in need. For over fifty years Catholic Social Services has been a vital part of the Church's mission and supporting families has been a priority. This proposed family support centre will enable our dedicated staff and volunteers to reach out to more people and I encourage you to help make it a reality through your generosity.

+Michael Dooley
Catholic Bishop of Dunedin



HELPING KIDS HELPING FAMILIES



Catholic Social Services
Proposed Family Support
Centre



CONTACT US

Ph: 03 455 3838

mike@cathsocialservices.org.nz



Catholic
Social
Services

Who Are We ?

Catholic Social Services is an outreach of the Catholic Bishop of Dunedin that has provided hope and help to anyone that wants it since 1968. With a suite of services and a dedicated staff committed to bringing help that changes lives for good CSS is a trusted source of hope.

What Do We Do ?

Families

Working together with mums and dads, the CSS counselling team help people address historical trauma, present issues or relationship conflict to help transform the family atmosphere. Our social workers will help people with parenting skills and plans and support people with addressing housing or welfare issues. And then, our groups give people a chance to learn new things together and become the best parents they can be for their kids.

Vulnerable individuals

Working together with our social work and community support team, or our counsellors, our range of services support people to live life well in community.

Children

Specialist help for kids that includes individual counselling and support groups that address grief and loss and the traumatic experience of being exposed to family violence. Children also are offered a safe place where they can see their mum or dad in supervised contact.

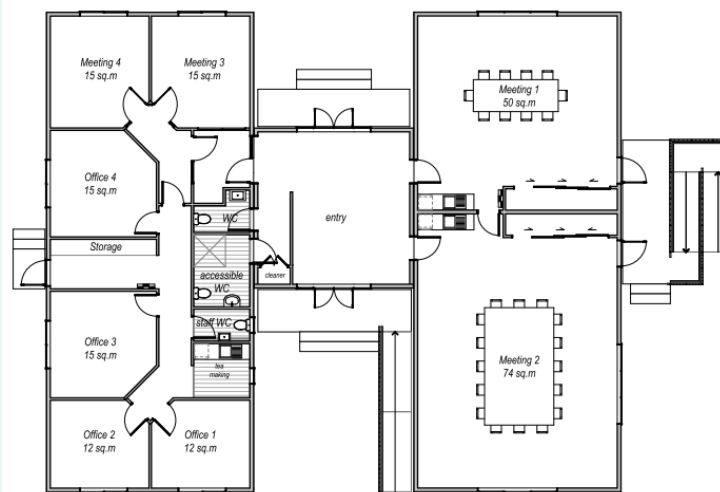
What have we achieved?

IFor Sarah* getting support from CSS has made a huge difference. *"I am seeing things with a different perspective and I am capable of doing what i need to do."* She also noted that the change in her has made a difference for her children. *"they have noticed a change in the family atmosphere".*

**not her real name*

What are we doing?

In partnership with The Sisters of Mercy, Nga Whaea Atawhai, we are expanding with a purpose-built Family Support Centre in South Dunedin from which families might get even better help and children greater support in a place that truly sees their needs as a priority.



“ CSS helped me to change and my kids are loving the new me

What do we need?

In Short - More Money

The total cost of the project, including a well designed building, gardens, carparks and playgrounds, is budgeted at \$1.4million. Funds already raised are now at \$900,000 with some further grants being considered.

How can you help?

Make a contribution

Make a one off contribution or donate a regular sum, It all helps to invest in change.. The table below shows how even \$6.41 a week can make a difference.

Contributions can be made online to:

Catholic Social Services

06-0901-0054890-27

OR

go to www.cathsocialservices.org.nz to make a credit card donation.

Reference your name and Centre donations Tax deductible

Find out more by signing up for our newsletter and you will be provided progress reports on our new building alongside the great work CSS is doing in meeting the growing need for help in our communities.

email: office@cathsocialservices.org.nz
or give us a call on 03 455 3838



Catholic Social Services

Working together to live life well